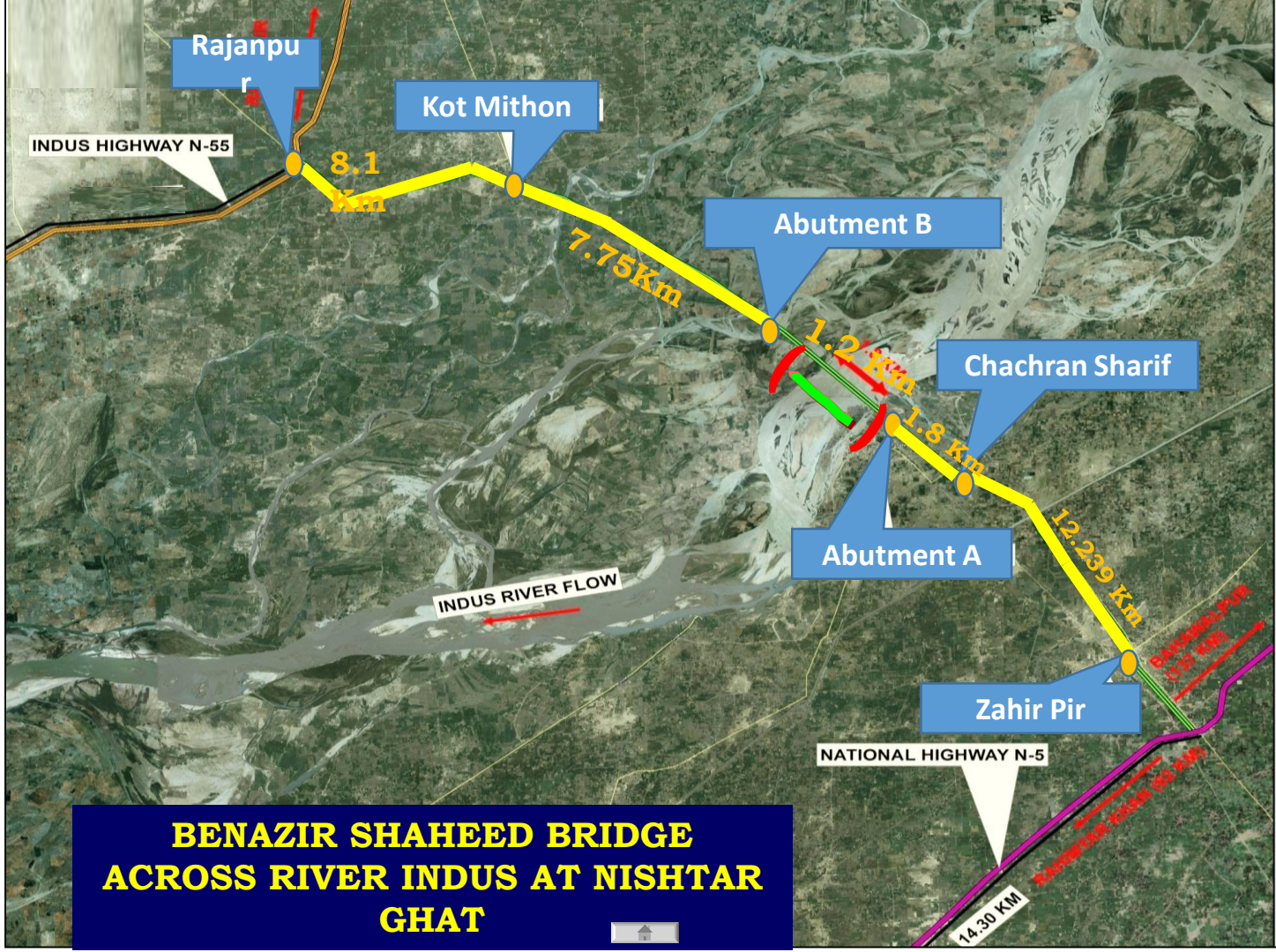


Ongoing Development Projects – Punjab (Fundamentals)

Sr. No	Project / Section	Km	Contractor	PSDP 2015-16	Progress (%)	Expected Completion	Map
1	Nishtar Ghat Bridge (Shaheed Benazir Bhutto Bridge) Package-I, II, III & IV	Pkg-I: 8.1 Pkg-II: 1.2 Pkg-III: 12.24	Pkg-I: CALSONS Pkg-II: FWO Pkg-III: RMC Pkg-IV: Salman	800	Pkg-I: 65 Pkg-II: 100 Pkg-III: 53 Pkg-IV: 45	Dec-16	Map View
2	Baba Farid Bridge (Sutlej)	0.57 + 8	Kingcrete Builders	--	70.05%	Apr-16	Map View
3	Gillani Road (Khad Factory to Pul Khadal) Multan	5.6	Abdul Khan & Co.	--	26%	Project is being closed	Map View
4	Sultan Bahoo Bridge (Shorkot - Garh Maharaja) Chenab 6 x Packages	Pkg-I: 0.85 Pkg-II: 3.2 Pkg-III: 4.09 Pkg-IV: 8.3 Pkg-V: 1.72 Pkg-VI: 7.11	Pkg-I: SARCO-Mishal Sania (JV) Pkg-II: HUK Pkg-III: Friends & HNAC (JV) Pkg-IV: Sachal – TTC (JV) Pkg-V & VI: Choudhry Const. Co.	950	Pkg-I: 99.8 (SC) Pkg-II: 92.47 Pkg-III: 94.64 Pkg-IV: 97.53 Pkg-V: 57.62 Pkg-VI: 99.5	May-16	Map View

Ongoing Development Projects - Punjab

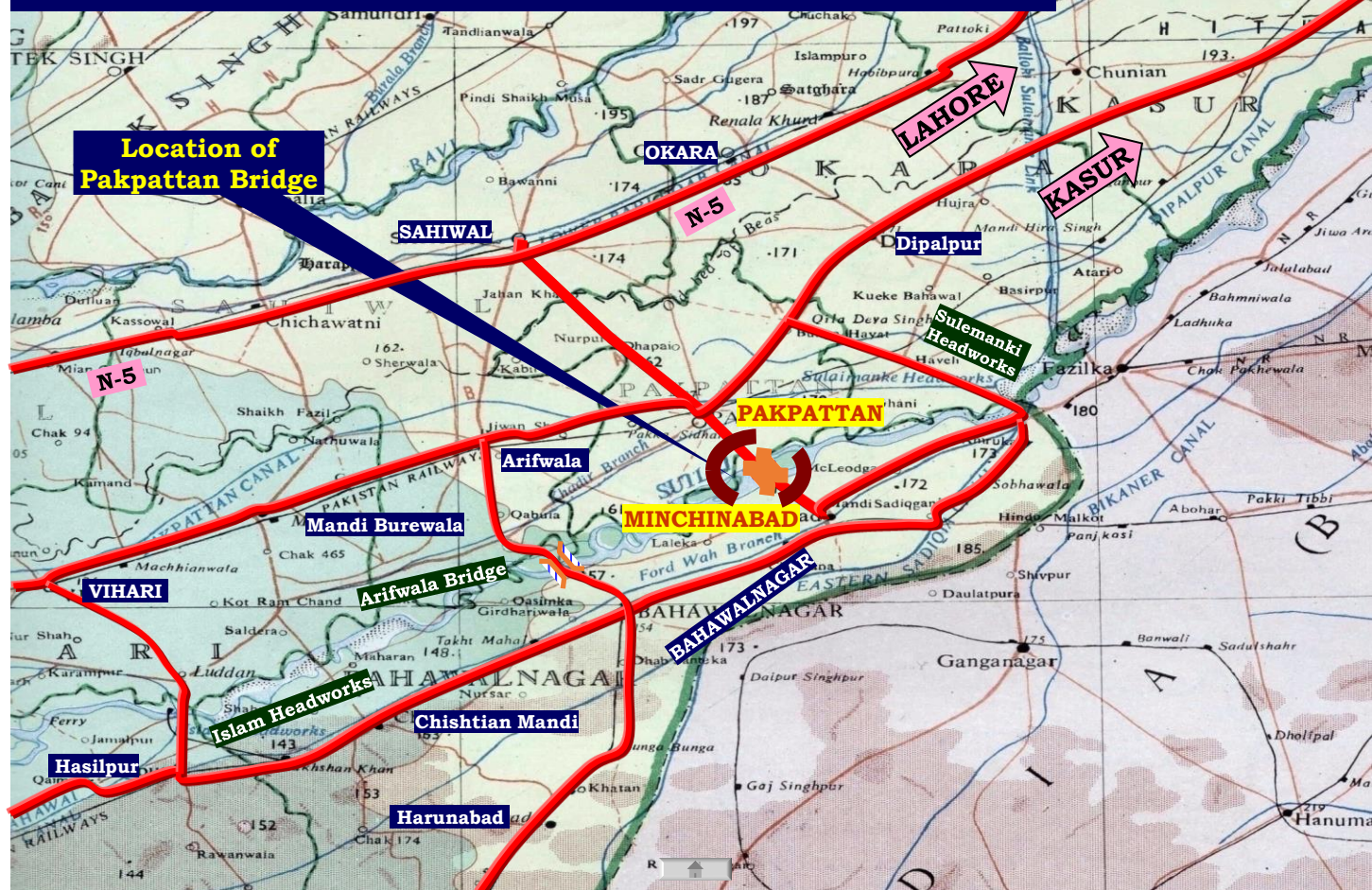
Sr. No	Project / Section	Km	Contractor	PSDP 2015-16	Progress (%)	Expected Completion	Map
5	Syedwala Bridge (Ravi)	0.61 + 3.5	SKB	300	23%	Jun-16	Map View
6	Old Shujabad Rd) N-115	8	SARCO / Mishal Sania (JV)	150	98% (SC)	Apr-16	Map View
7	Tri District Link (Jalalpur Pirwala - Uch Sharif) 3 x Packages	Pkg-I: 7.5 Pkg-II: 7.3 Pkg-III: 27	Pkg-III= SKB Pkg-II: RMC Pkg-I: Friends Enterprises	--	Pkg-III= 58 Pkg-I & II are completed	Dec-16	Map View



**BENAZIR SHAHEED BRIDGE
ACROSS RIVER INDUS AT NISHTAR
GHAT**



LOCATION OF BABA FARID BRIDGE ACROSS RIVER SUTLEJ LINKING PAKPATTAN WITH MINCHINABAD



**Location of
Pakpattan Bridge**

LAHORE

KASUR

OKARA

SAHIWAL

N-5

DIPALPUR

**Sulemanki
Headworks**

PAKPATTAN

Arifwala

MINCHINABAD

Mandi Burewala

VIHARI

Arifwala Bridge

BAHAWALNAGAR

Islam Headworks

Chishtian Mandi

Hasilpur

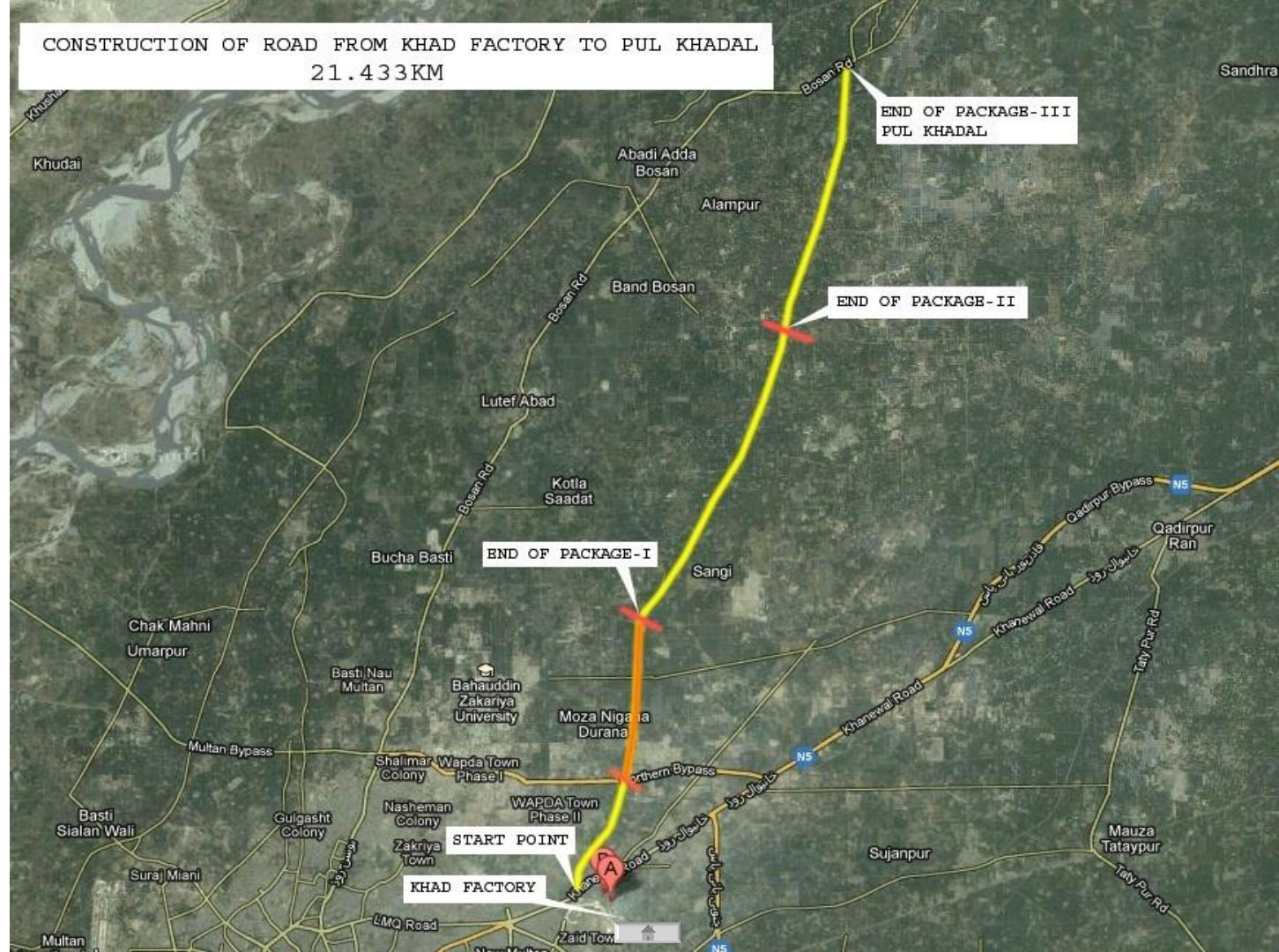
Harunabad

Ganganagar

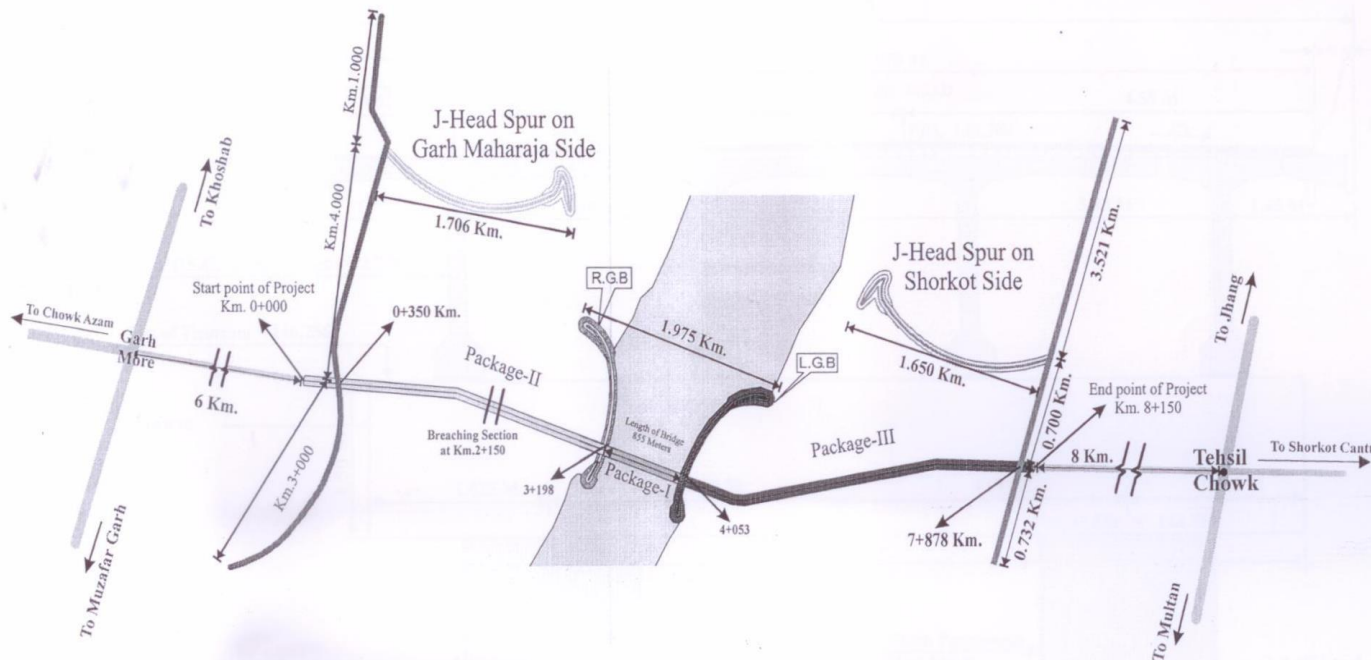
Dholpal

Hanuma

CONSTRUCTION OF ROAD FROM KHAD FACTORY TO PUL KHADAL
21.433KM



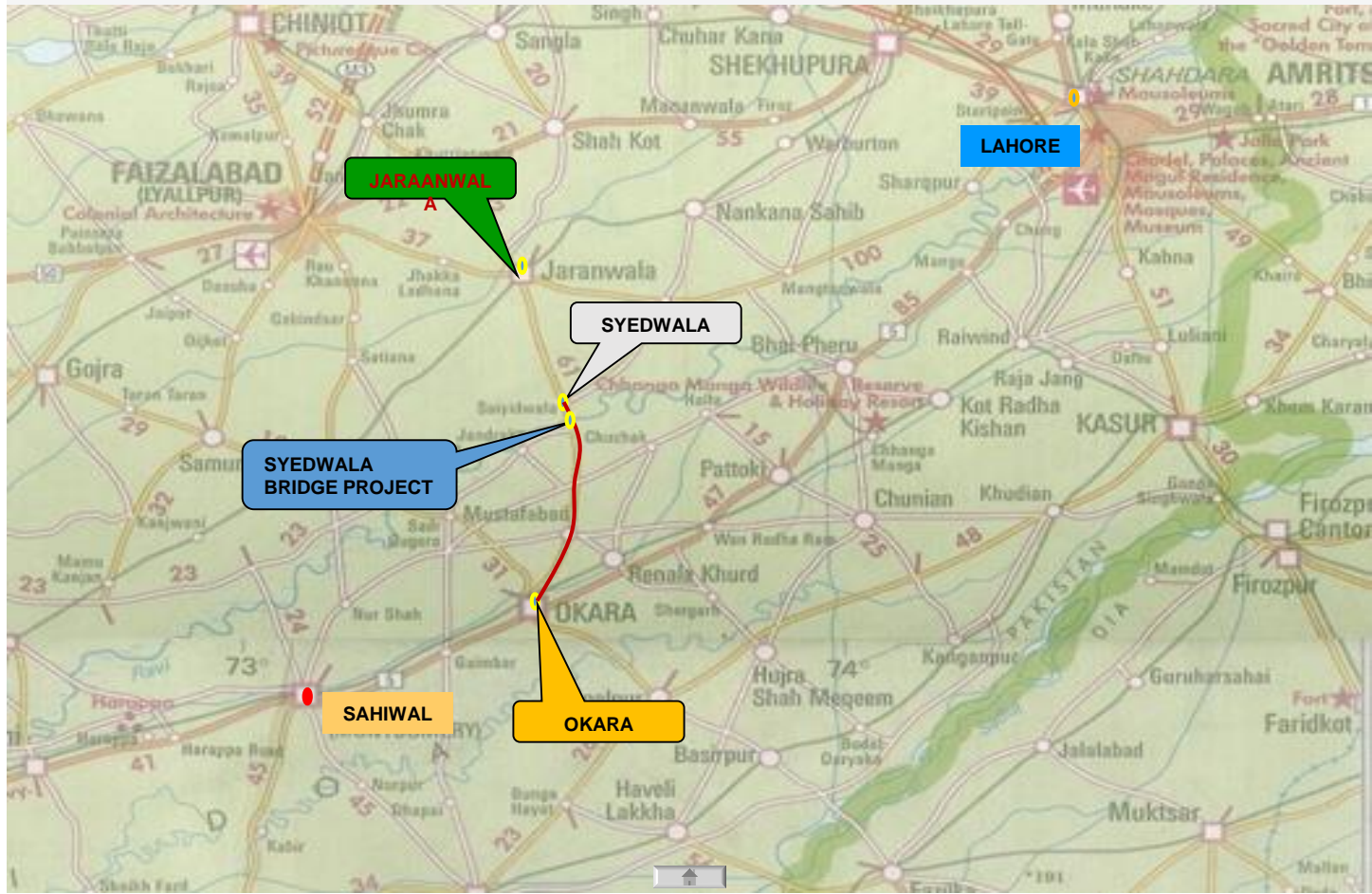
**CONSTRUCTION OF SULTAN BAHOO BRIDGE OVER RIVER CHENAB
LINKING SHORKOT AND GARH MAHRAJA
GENERAL LAYOUT**



Garh Maharaja Side Approach = 3.198 Km.
 Bridge Length = 0.855 Km.
 Shorkot Side Approach = 4.097 Km.
 Total Length of Project = 8.150 Km.

Flood Protection Bund on Garh Maharaja Side = 8.000 Km.
 Garh Maharaja Side J-Spur = 1.706 Km.
 Shorkot Side J-Spur = 1.650 Km.
 Length of Existing Dyke on Shorkot Side = 4.953 Km.

SYED WALA BRIDGE OVER RIVER RAVI



MULTAN - SHUJAABAD - JALALPUR PIRWALA - UCH - TM PANAH ROAD (138 KM)

