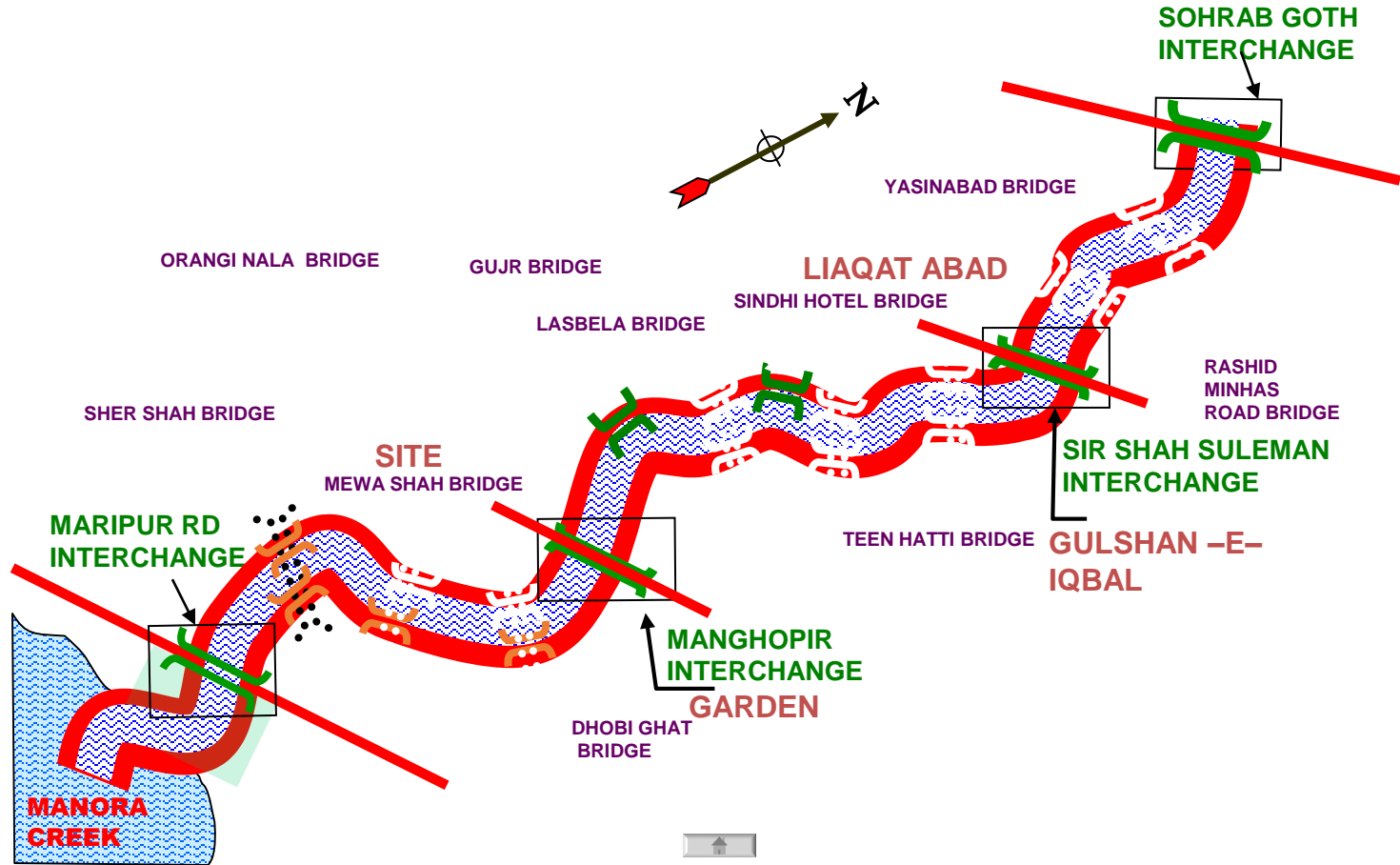


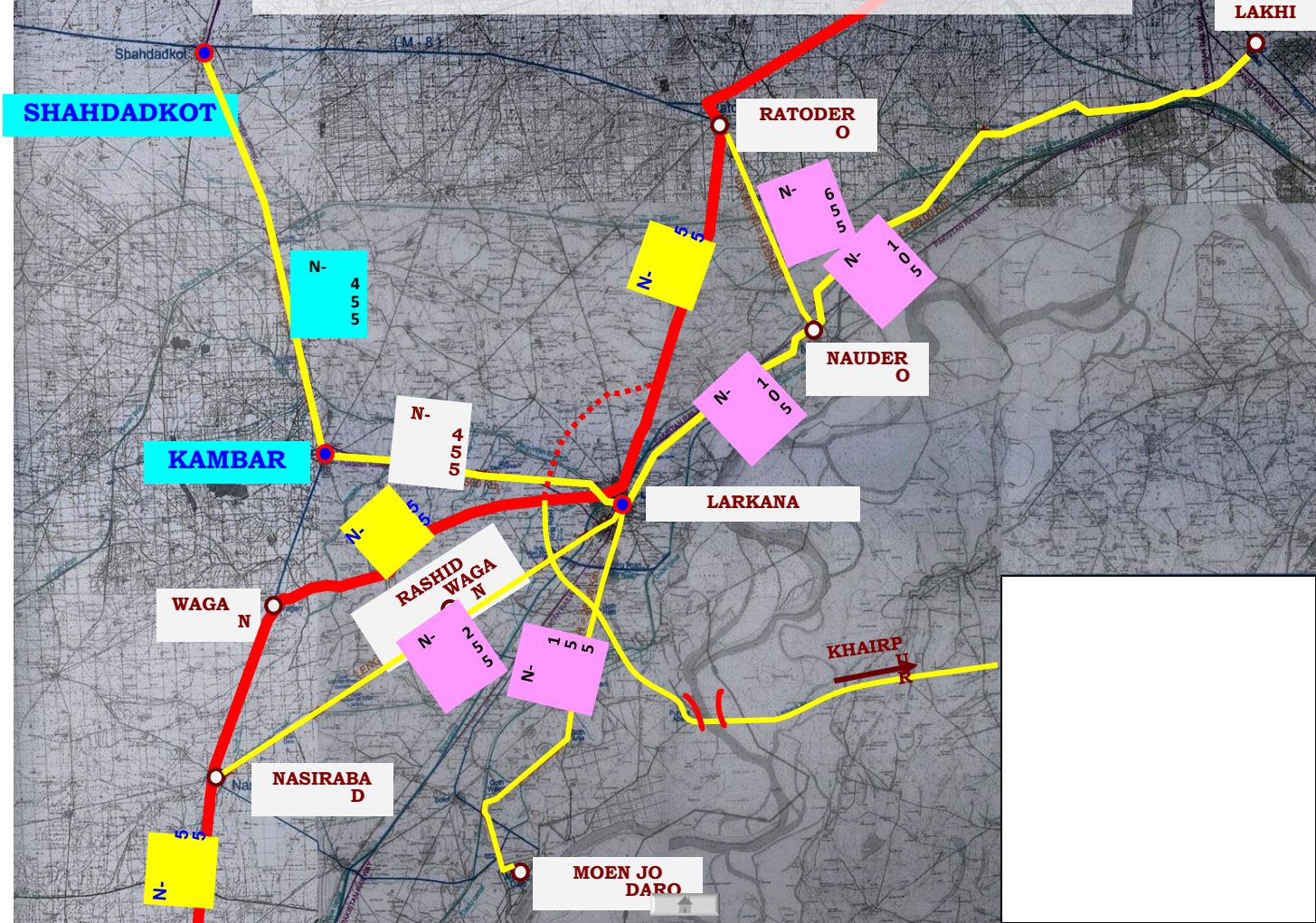
Ongoing Development Projects – Sindh

Sr. No	Construction Project	Km	Contractor	PSDP 2015-16	Progress	Exp Comp	Map
1	Lyari Expressway	32	FWO	100	81%	Dec-16	Map View
2	Kamber – Shahdadt	29	Al-Mehran/RMS	-	88.51%	Apr-16	Map View
3	Qazi Ahmed - Amri Bridge (4 Packs)	18	Pkg-I: Sachal Pkg-II: SMDB Pkg-III & IV: Sachal	1000	79%	Dec-16	Map View
4	Gharo-Keti Bunder (3 Packs)	84	Pkg-I: Qasim Khan Pkg-II: MAJ & FE Pkg-III: ZARGHOON	-	74%	Jun-16	Map View
5	Larkana-Nasirabad (Rehab)	34	Lilley International	-	81.3%	Apr-16	Map View
6	Larkana- Mohenjodaro upto Airport (2 Packs)	28	Sultan Mehmood	-	96%	Mar-16	Map View
7	Larkana – Kamber	20	Al-Mehran	-	86%	Apr-16	Map View

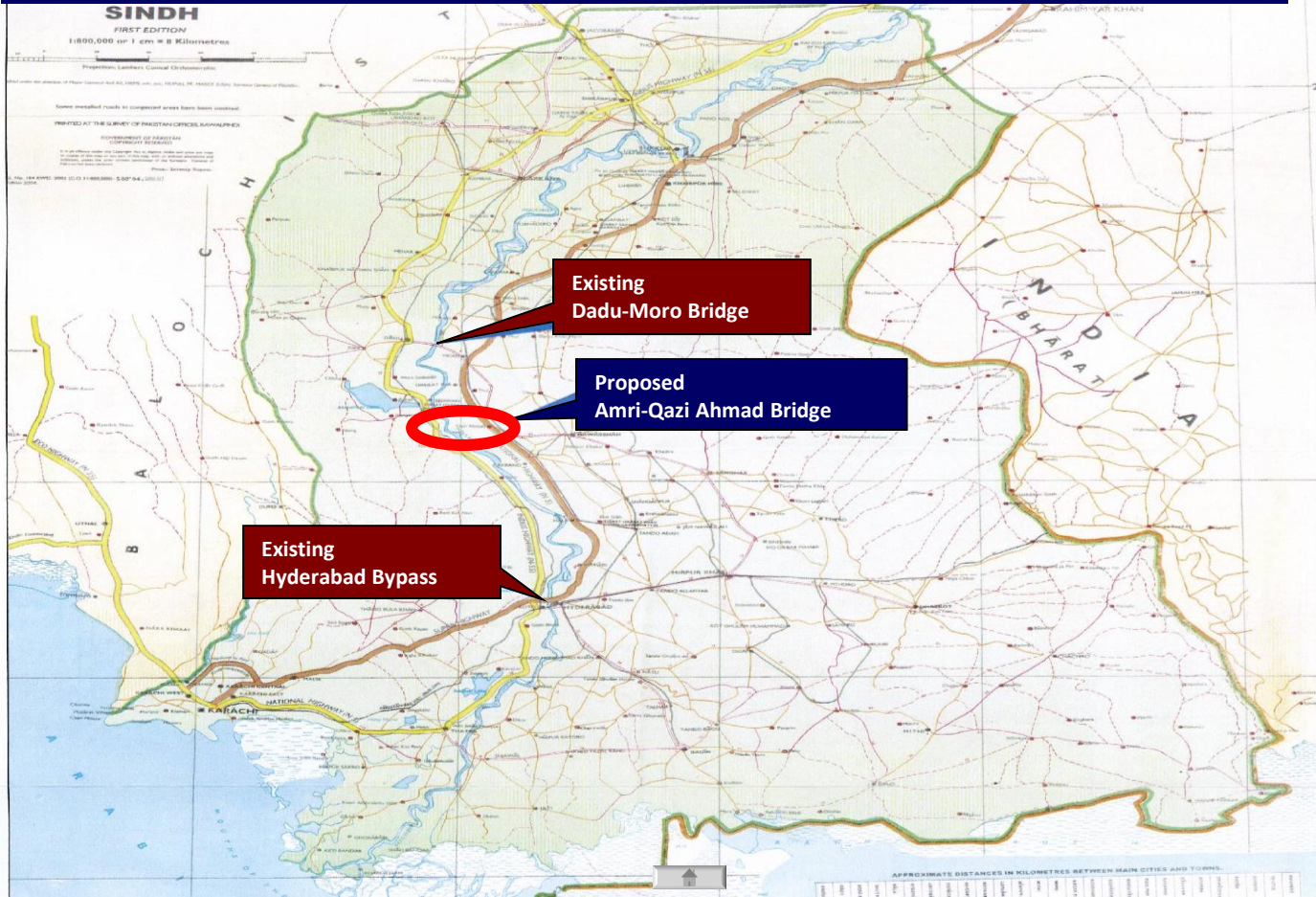
LYARI EXPRESSWAY PROJECT

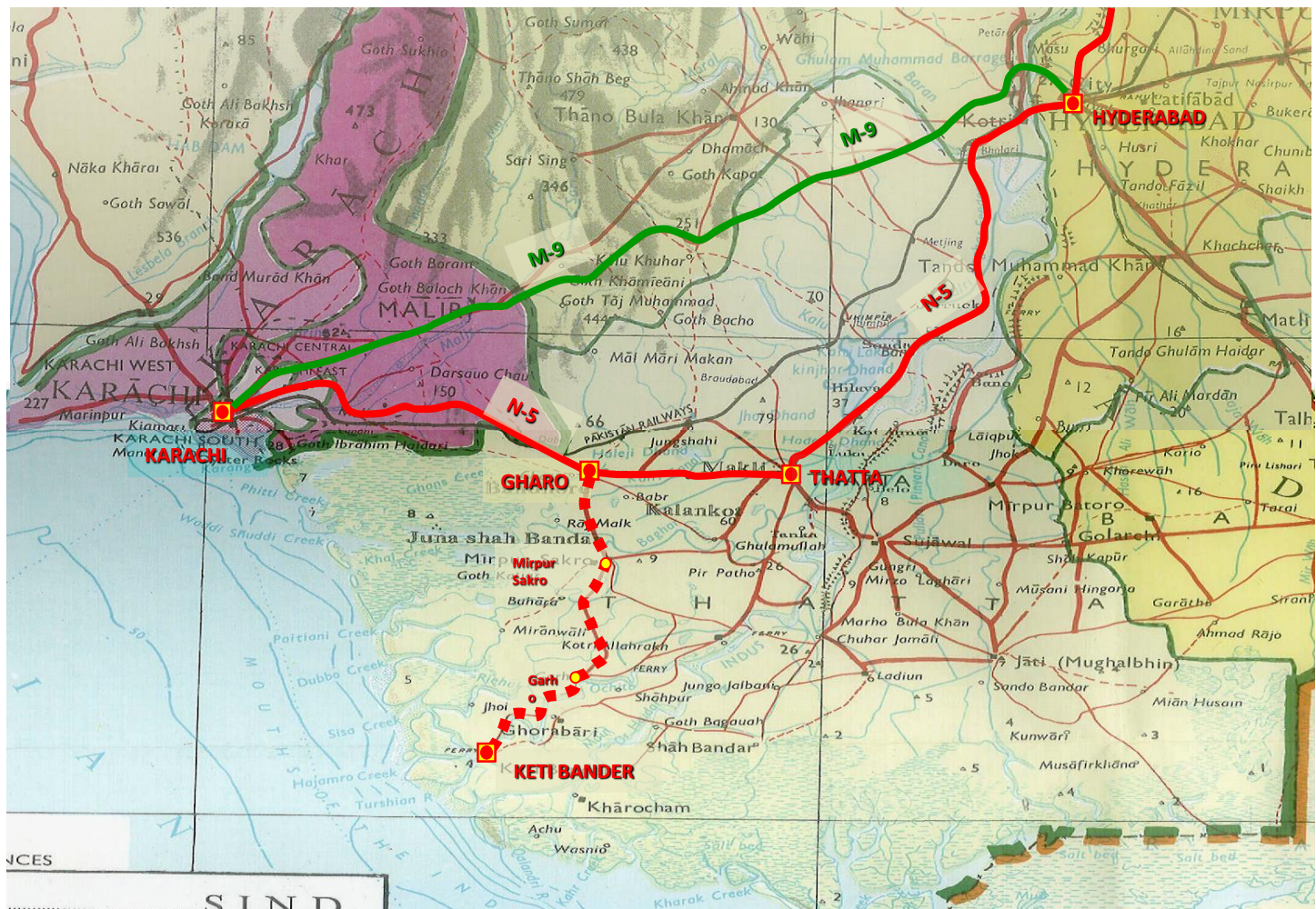


KAMBER - SHAHDADKOT



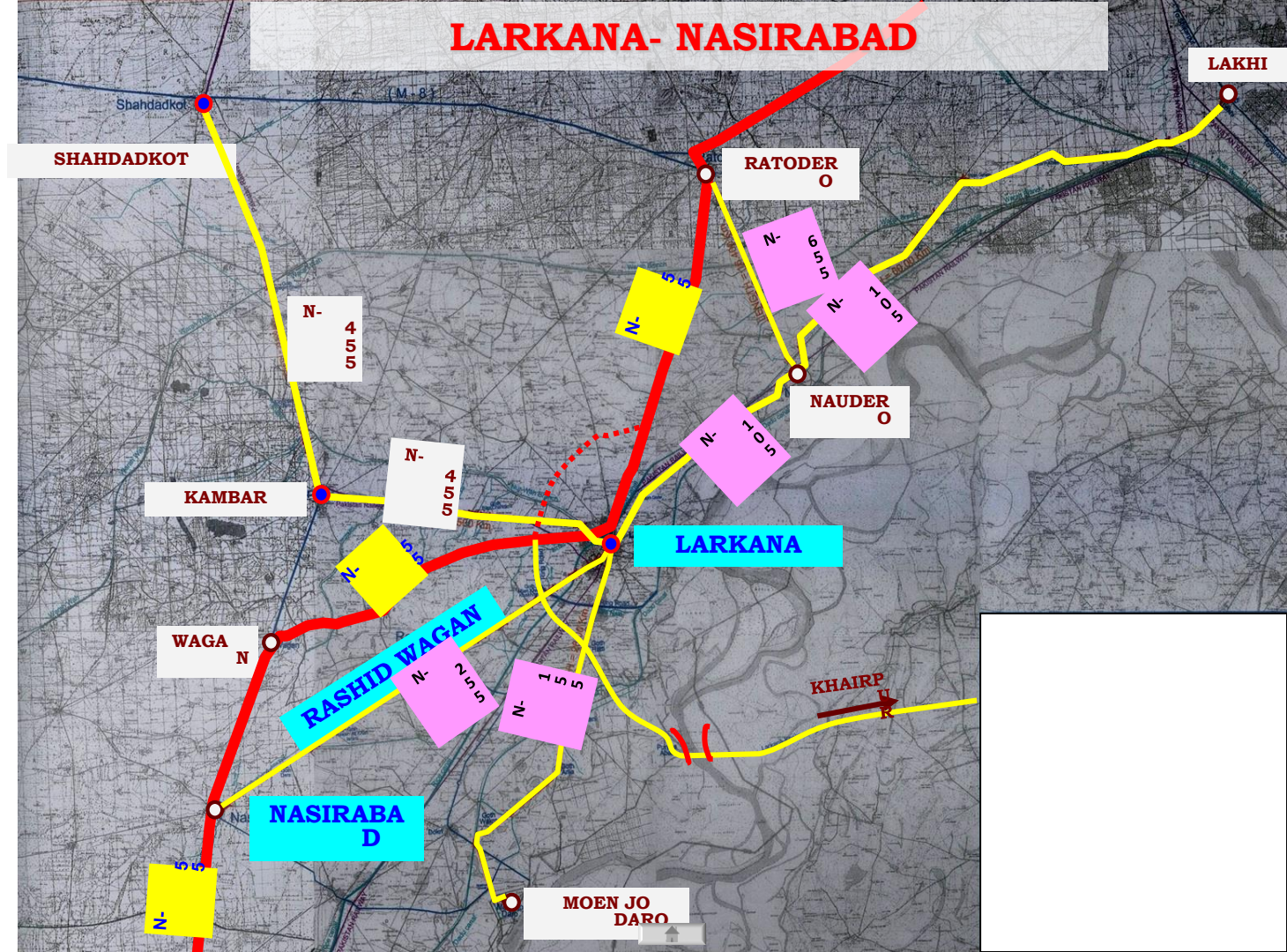
BRIDGE ACROSS RIVER INDUS AT QAZI AHMED AMRI LOCATION MAP



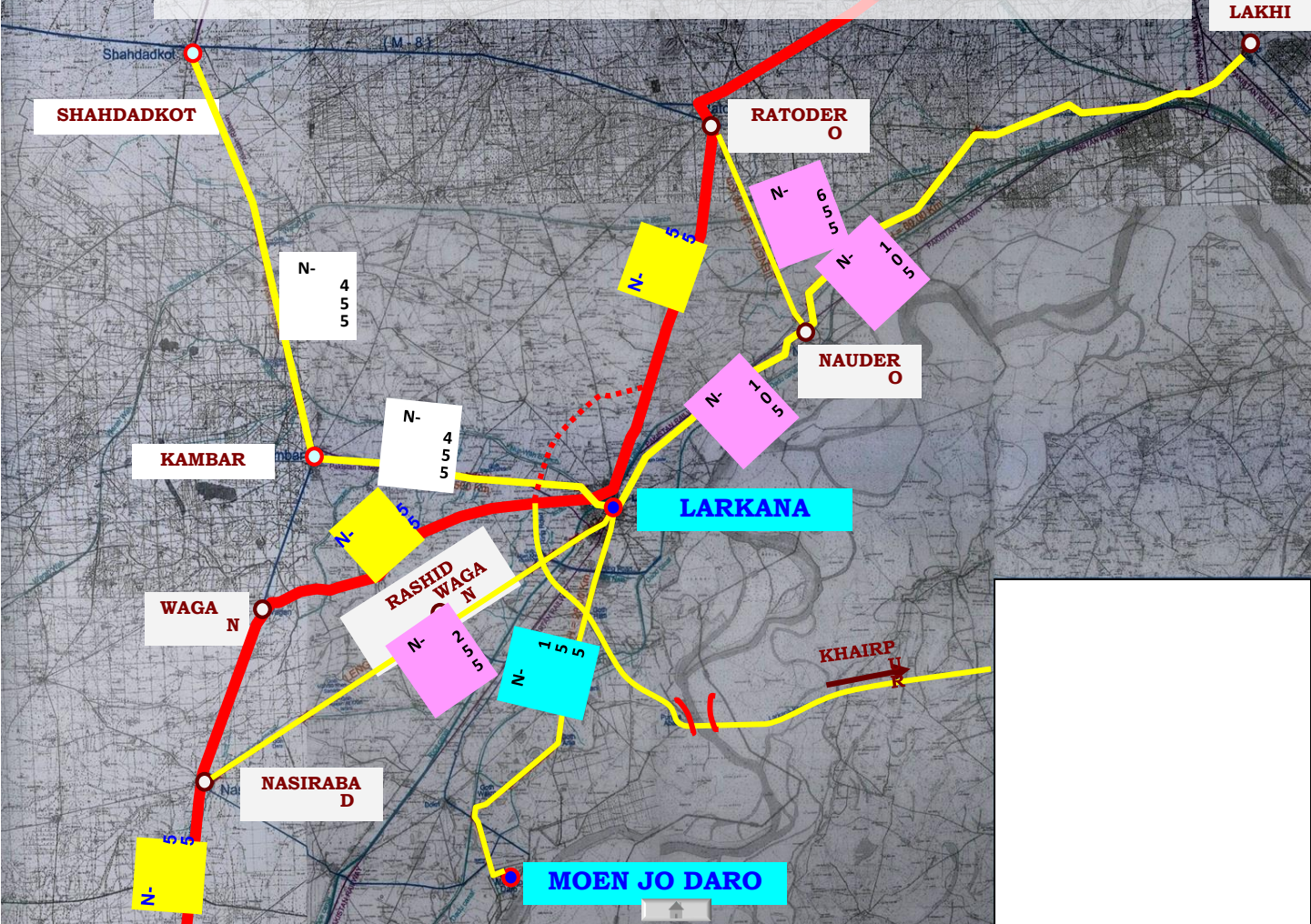


GHARO-KETI BANDEP ROAD (N-110, 90 KM)

LARKANA- NASIRABAD



LARKANA- MOHENJODARO UPTO AIRPORT



LARKANA- KAMBER

